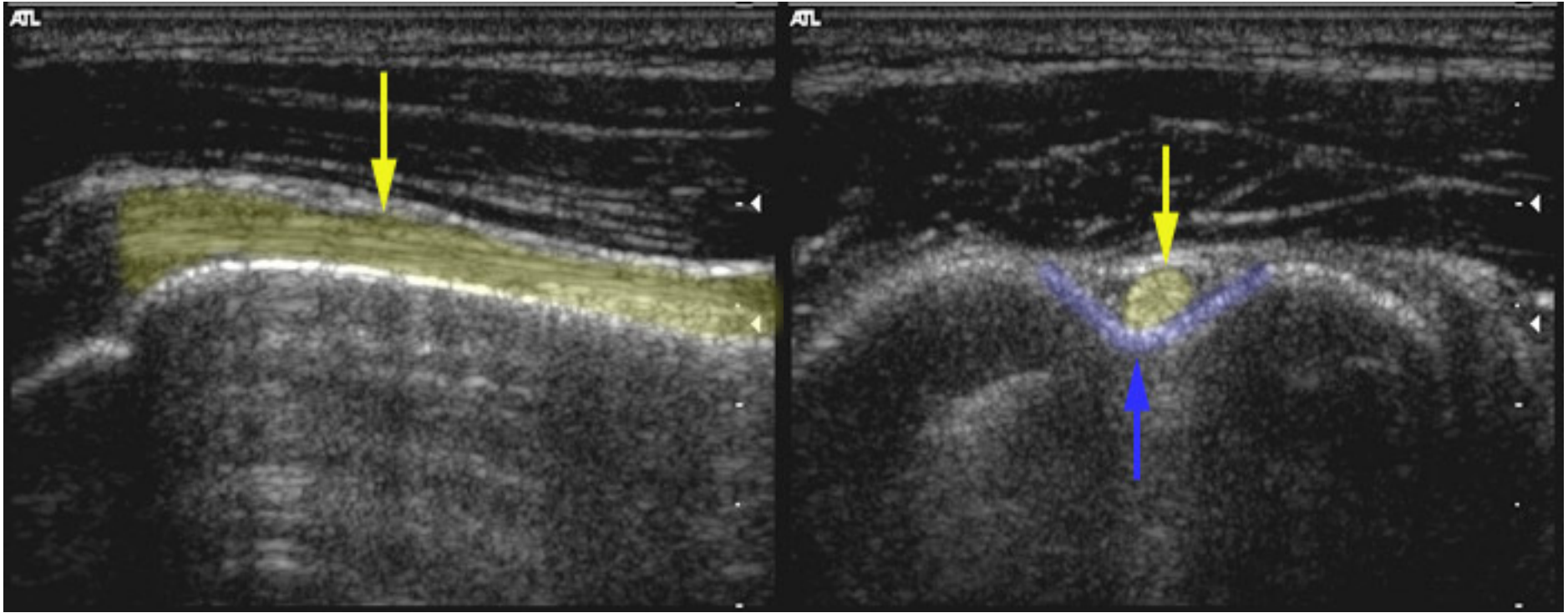


It's not a baby!!!

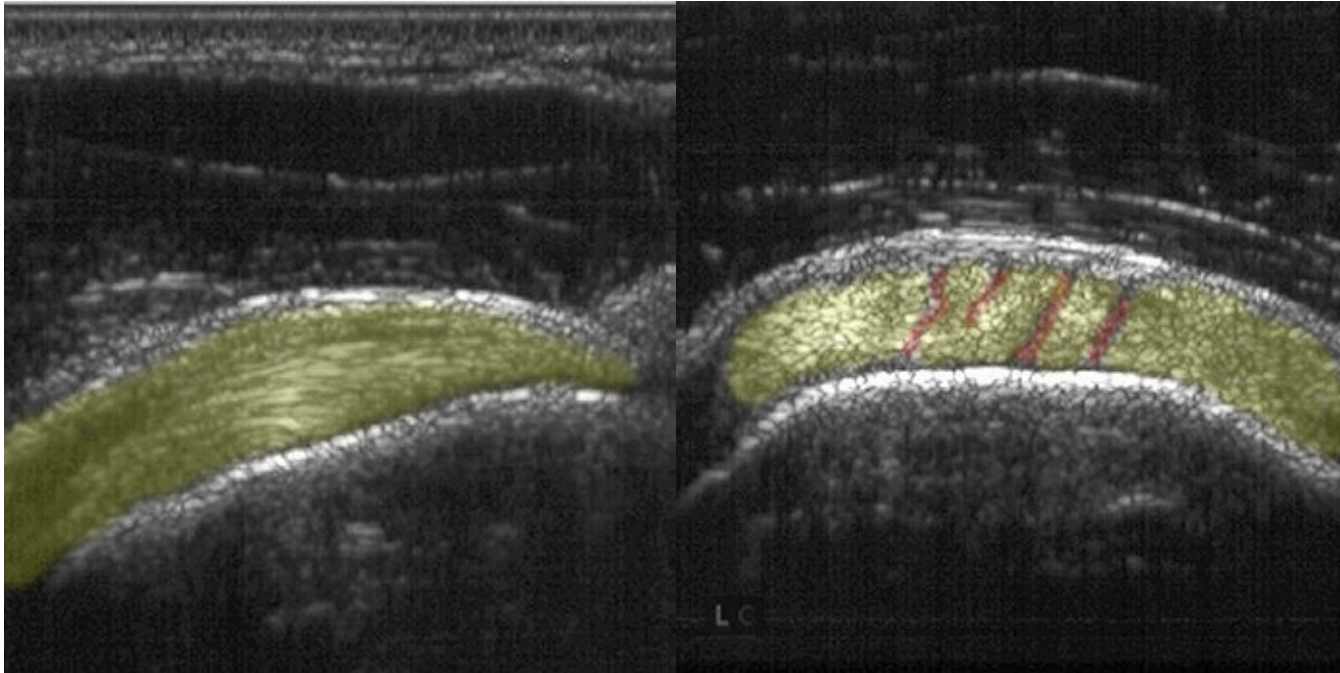
The text 'It's not a baby!!!' is rendered in a large, bold, sans-serif font. The color transitions from a bright yellow at the bottom to a dark brown at the top. The text is slanted slightly to the right. Below the main text, there is a shadow of the same text, also slanted, creating a 3D effect.

It's your Shoulder!!



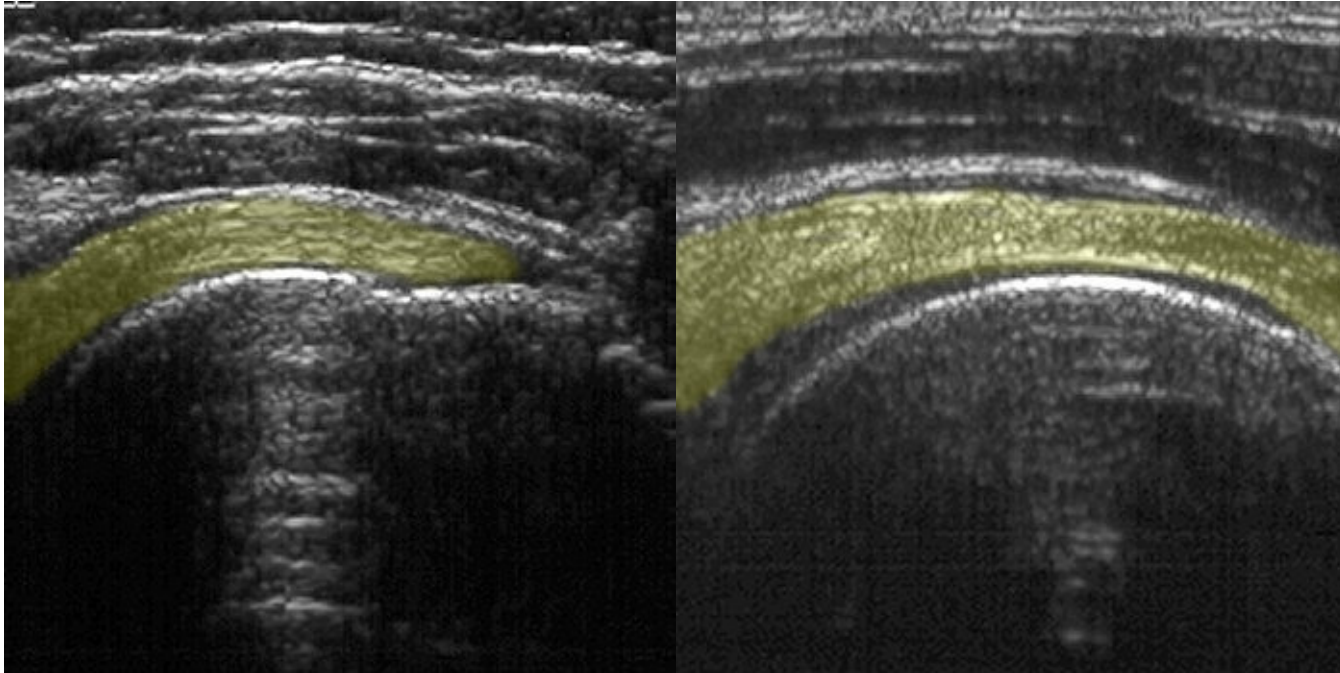
Left: Biceps Tendon - Longitudinal sonogram shows the normal appearance of the long head of the biceps tendon (yellow shade/arrow).

Right: Biceps Tendon - Transverse sonogram shows the long head of the biceps tendon (yellow shade/arrow) within the bicipital groove (blue line/arrow).



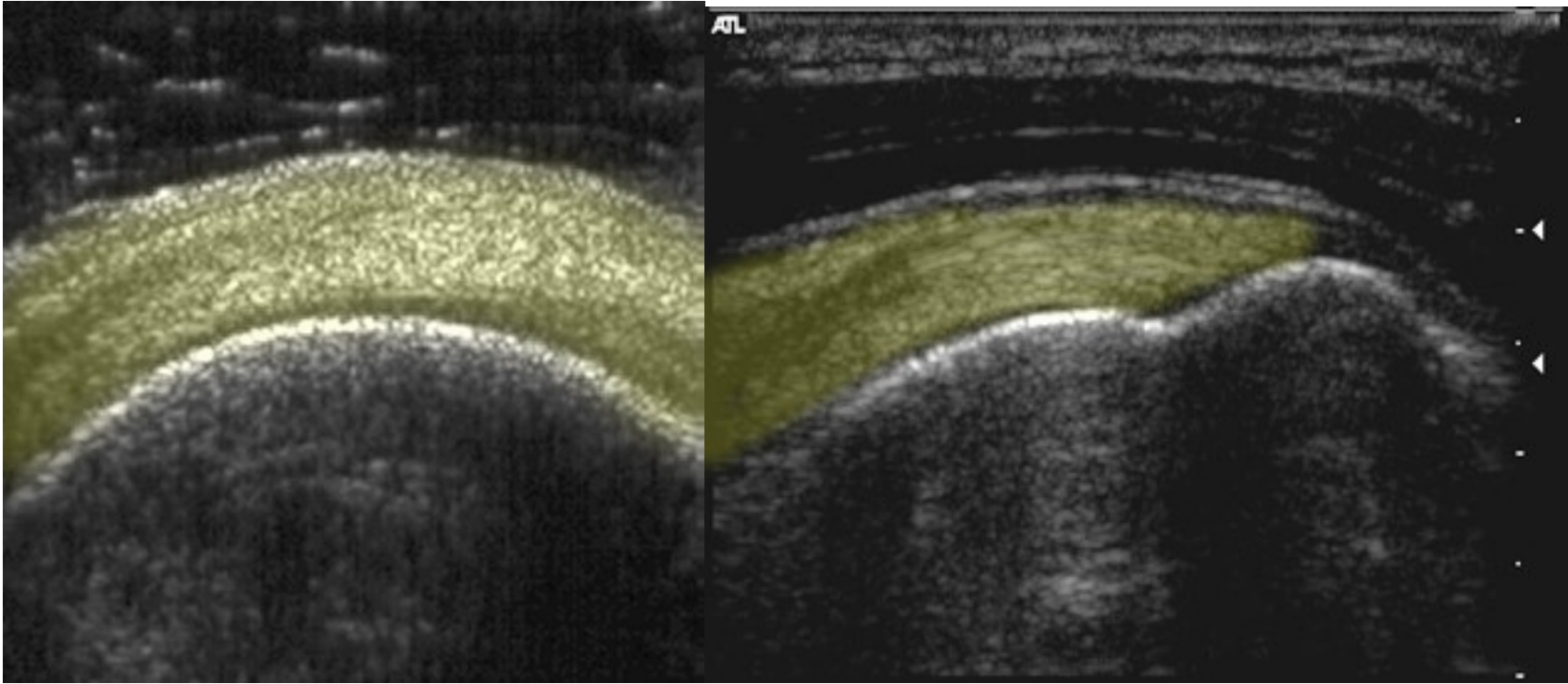
Left: Subscapularis - Longitudinal sonogram of the normal subscapularis tendon (yellow shade).

Right: Subscapularis - Transverse sonogram shows the normal multipennate appearance (red lines) of the multiple bundles of the subscapularis tendon (yellow shade).



Left: Infraspinatus - Longitudinal sonogram of the normal infraspinatus tendon (yellow shade).

Right: Infraspinatus - Transverse sonogram of the normal infraspinatus tendon (yellow shade).



Left: Supraspinatus - Transverse sonogram of the normal supraspinatus tendon (yellow shade).

Right: Supraspinatus - Longitudinal sonogram of the normal supraspinatus tendon (yellow shade).

Front View

Muscles of the Rotator Cuff

Back View

Subscapularis

Supraspinatus

Infraspinatus

Supraspinatus

Teres Minor

©MMG 2001

